

SSD



yBOX-X58 I3-10110U v.4 - Computer in aluminum housing, Rugged miniPC for industry with 8GB RAM and with support for M.2 SSD, 256GB SSD for office and work, WIFI+BT

Category:	MiniPC Industry
Manufacturer:	Mobikator
Supported OS:	Supported: Windows 10, Linux
Installed OS:	-----
Chipset:	Intel Chipset
CPU Support:	Intel Core i3
Installed CPU:	Intel Core I3 10110U
Graphic Card:	Intel UHD Graphics
Memory Support:	DDR4 (max. 16GB)
Installed Memory:	8GB DDR4
Storage (HDD) Support:	SSD
Installed Storage (HDD):	256GB SSD
IP Norm:	-----
Temp:	-20°C to 60°C
Storage temperature:	-30°C to 70°C
Humidity:	0% ~ 90%
Others:	Color Black, power supply available in the kit
LAN:	2*GbE RJ45 Realtek 8111H

Wireless LAN card:	1xMini PCIe WiFi
3G:	-----
Bluetooth:	Yes
Rear Panel (ports):	Jack (headphones) Jack (microphone) 2xGigabit Ethernet HDMI VGA DC-IN 12V
Front Panel (ports):	On/Off Switch 4xUSB 2.0 4x.USB 3.0 2xRS232
Expansion:	-----
Power:	12V - power supply available in the kit
Watch Dog Timer:	-----
CD/DVD Drive:	-----
TV Tuner:	-----
Dimensions:	193.9 x 127 x 57.2 mm
Fanless:	Yes
Weight:	1.5kg

Product from the Archive - production finished



TECHNICAL SPECIFICATION

RESISTANCE AND DURABILITY

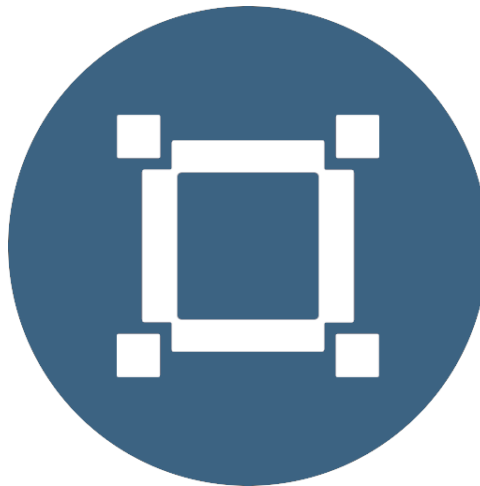
CONNECTIVITY AND COMMUNICATION

DEVICE APPLICATION

AVAILABLE VERSIONS

Small dimensions industrial computers excel in environments where dust, dirt and moisture predominate. They are ideal for applications requiring quiet operation. Small and reliable MiniPC use heat-pipe technology and aluminum fins for passive cooling. The robust mini Industrial Computer MiniPC yBOX-X58

is a device designed for all industrial and non-continuous applications requiring continuous operation - 24 hours, 7 days a week.



Small dimensions

The compact housing means that the Mini PC will fit wherever you need it and is easy to carry.





Lightweight design

The computer's weight does not exceed 1.0 kg, so it can be conveniently carried in a bag or backpack.



Efficient components

The Intel Core I3 10110U dual-core CPU provides improved device performance.



Wireless network

The mini PC can be connected to nearby wireless networks by equipping it with an optional Wi-Fi module.



Quick start

A modern SSD drive will increase the speed of application programs and ensure quiet computer operation.



Passive cooling

The use of passive cooling in the Mini PC ensures silent operation and slows dust deposition.

SPECIFICATION

yBOX X58

Processor	Intel Core I3 10110U
Operation system	Supported: Windows, Linux
RAM	8GB DDR4
Drive	SSD: 256GB
Graphic card	Intel® UHD Graphics
Connectivity	WLAN: 1xMini PCIe WiFi + Bluetooth LAN: 2*GbE RJ45 Realtek 8111H
Front panel	On/Off switch 4xUSB 2.0 4x.USB 3.0 2xRS232
Rear panel	Jack (headphones) Jack (microphone) 2xGigabit Ethernet HDMI VGA DC-IN 12V

yBOX X58

Available colors	Black
Dimensions	193.9 x 127 x 57.2 mm
Weight	1.5 kg



Detailed device specification is available in the "Technical data".

Efficient processor



The industrial mini-computer yBOX-X58 uses an efficient and energy-saving Intel Core i3 10110U processor. Inside it there are four cooperating cores enabling more efficient processing of many tasks at the same time. The shared cache memory in which the multilevel hierarchy is used is dynamically allocated to each processor core depending on the load. This reduces the average access time to the main memory.

Interfaces



Dimensions



Dimensions	155x126x52 mm
Weight	1.0 kg

Passive cooling

The industrial Mini PC uses a proven cooling system, based only on solid elements, mainly heat sinks. The system uses the phenomenon of metals passing thermal energy into the environment - there are no additional moving elements in the form of eg fans. This solution ensures noiseless operation, lower failure rate and greater protection against dust and other dirt while reducing the amount of energy consumed.

RESISTANCE AND DURABILITY

Temperatures

MiniPC yBOX-X58

is designed for continuous operation in both very low and high temperatures ranging from -20°C to 65°C. If the device is switched off, it can already handle temperatures in the range of -40°C to 80°C.

Work temp.	-20°C to 60°C
Storage temp.	-30°C to 70°C
Humidity	0% to 90%

Mechanical damage

The passive cooling system used in the MiniPC yBOX-X58 make this computer very resistant to various types of mechanical injuries. An additional advantage of industrial computers is a solid construction made of high quality aluminum and specially designed in such a way that in addition to high efficiency in heat dissipation, it can also resist any external damage.

CONNECTIVITY AND COMMUNICATION

Wireless network

The dual-band Wi-Fi module provides quick access to the network wherever you can connect to secured or open Wi-Fi networks. This is a convenient solution for people who have a router at home or place of residence and a wireless network that can be used at no extra charge. Industrial MiniPC yBOX-X58 has been equipped the standard of - Mini PCIe WiFi , which allows transfer of files at a dizzying speed of up to 1000 Mb/s.

Wired LAN Network

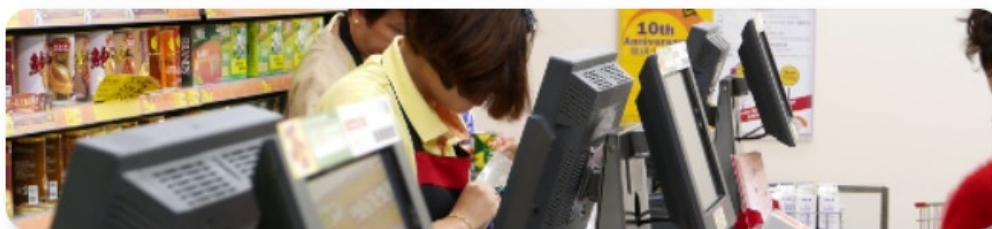
The MiniPC yBOX-X58 has built-in Realtek 8111H network adapter that can work in a fast Gigabit Ethernet network.



DEVICE APPLICATION

Trade and service

Mini PC is an ideal tool to support us in the implementation of many activities in the field of trade, small dimensions increase the possibility of its adaptation to activities such as issuing invoices or preparing documentation, which in turn allows us to convenient and optimal sales management.



Warehouse and logistics

Thanks high performance an industrial computer can be used to connect

multiple devices in a warehouse and make their management much easier. Its rugged casing and the fanless cooling system are ideal for harsh environments in such rooms. The solid construction guarantees long-lasting work, even in environments with high dustiness and dirt.



Transport and motorization

A small industrial computer can be used in transport thanks to the ability to work on 12V power supply. Then the mini computer can be used in passenger cars, buses, trams, taxis, trains and even in airplanes. It allows you to inform the driver about the current state of the vehicle, transfer its current location

to the management center, display information for passengers, etc. It performs well in vehicles where small dimensions are important.



More photos in full resolution available in the "Gallery".

AVAILABLE VERSIONS

The industrial mini-computer MiniPC yBOX-X58 is offered in several versions to suit different needs. By clicking on the number of the hardware configuration you will be redirected to the product with the parameters given in the table below.

	v.0	v.1	v.2	v.3	v.4	v.5
4GB DDR4 RAM	—	+	+	—	—	—
8GB DDR4 RAM	—	—	—	+	+	—
16GB DDR4 RAM	—	—	—	—	—	+
64GB SSD	—	+	—	—	—	—
128GB SSD	—	—	+	+	—	—

256GB SSD	—	—	—	—	+	—
512GB SSD	—	—	—	—	—	+
WIFI	—	+	+	—	—	—
WIFI + BLUETOOTH	—	—	—	+	+	+

